



basic education

Department:
Basic Education
REPUBLIC OF SOUTH AFRICA

**NATIONAL
SENIOR CERTIFICATE**

GRADE 12

MATHEMATICAL LITERACY P2

ADDENDUM

NOVEMBER 2017

This addendum consists of 7 pages with 6 annexures.

ANNEXURE A

QUESTION 1.1

SUMMARY OF INCOME STATEMENT AND EXPENDITURE STATEMENT FOR
THE YEAR ENDED 31 MARCH 2016

	Notes	2016 R'000	2015 R'000
Primary income	1	2 403 509	2 250 041
Other income		120 915	86 609
Primary expenses	2	(2 163 571)	(1 993 476)
Other expenses: Interest paid		(202)	(172)
Total annual profit		360 651	342 534

NOTES TO THE ANNUAL FINANCIAL STATEMENTS

	2016 R'000	2015 R'000
1. Primary income		
Service fees	...	2 249 081
Product sales	...	960
Total annual primary income	2 403 509	2 250 041
2. Primary expenses		
Advertising and promotions	(67 257)	(56 401)
Communication costs	...	(32 187)
Consumables	(640 601)	(582 823)
Depreciation	(69 866)	(64 748)
Employee benefits	(953 592)	(888 662)
Freight	(135 768)	(125 736)
Rent	(34 087)	(30 115)
Product testing	(55 267)	(54 252)
Other expenses – Includes bad debts written off, computer costs, foreign exchange variance, insurance, repairs and maintenance	(176 363)	(158 552)
Total annual primary expenses	(2 163 571)	(1 993 476)

[Adapted from 2016 SANBS Annual Report]

NOTE: Brackets () indicate deduction.

ANNEXURE B**QUESTION 1.2****TABLE 1: INDIVIDUAL TAX RATES FOR THE 2016/2017 TAX YEAR**

TAXABLE ANNUAL INCOME	RATES OF TAX
R0 –R188 000	18% of each R1
R188 001–R293 600	R33 840 + 26% of the amount above R188 000
R293 601–R406 400	R61 296 + 31% of the amount above R284 100
R406 401–R550 100	R96 264 + 36% of the amount above R406 400
R550 101–R701 300	R147 996 + 39% of the amount above R550 100
R701 301 and above	R206 964 + 41% of the amount above R701 300
TAX REBATES	
Primary rebate	R13 500
Secondary rebate (for persons 65 years and older)	R7 407
Tertiary rebate (for persons 75 years and older)	R2 466

[Source: *SARS pocket guide*, 2016/2017]

ANNEXURE C**QUESTION 2.3****TABLE 4: COMPARISON OF THE MEAN FUEL PRICES PER COUNTRY BY PRICE, AFFORDABILITY AND PERCENTAGE OF MEAN INCOME SPENT ON FUEL**

COUNTRY	MEAN FUEL PRICE		AFFORDABILITY		MEAN INCOME SPENT ON FUEL	
	RUSSIAN ROUBLE PER GALLON	RANKING	GALLON COST AS A PERCENTAGE OF MEAN DAILY WAGE	RANKING	PERCENTAGE	RANKING
Venezuela	21,44	1	0,07	1	0,02	1
China	237,93	22	19,44	50	0,52	3
Norway	425,52	61	3,63	10	0,63	7
Nigeria	92,33	5	22,57	51	0,91	14
Italy	395,98	59	8,57	29	1,12	20
India	236,51	20	93,76	61	1,23	25
Chile	260,87	24	12,52	38	2,03	46
Russia	135,67	8	9,01	30	2,17	47
Canada	226,30	18	3,32	9	2,97	58
Mexico	193,45	14	13,92	44	3,62	60
South Africa	237,35	21	26,20	55	4,11	61

[Adapted from bloomberg.com/graphic, 20 Feb. 2017]**EXCHANGE RATES:**

1 Russian rouble = 0,016 euro

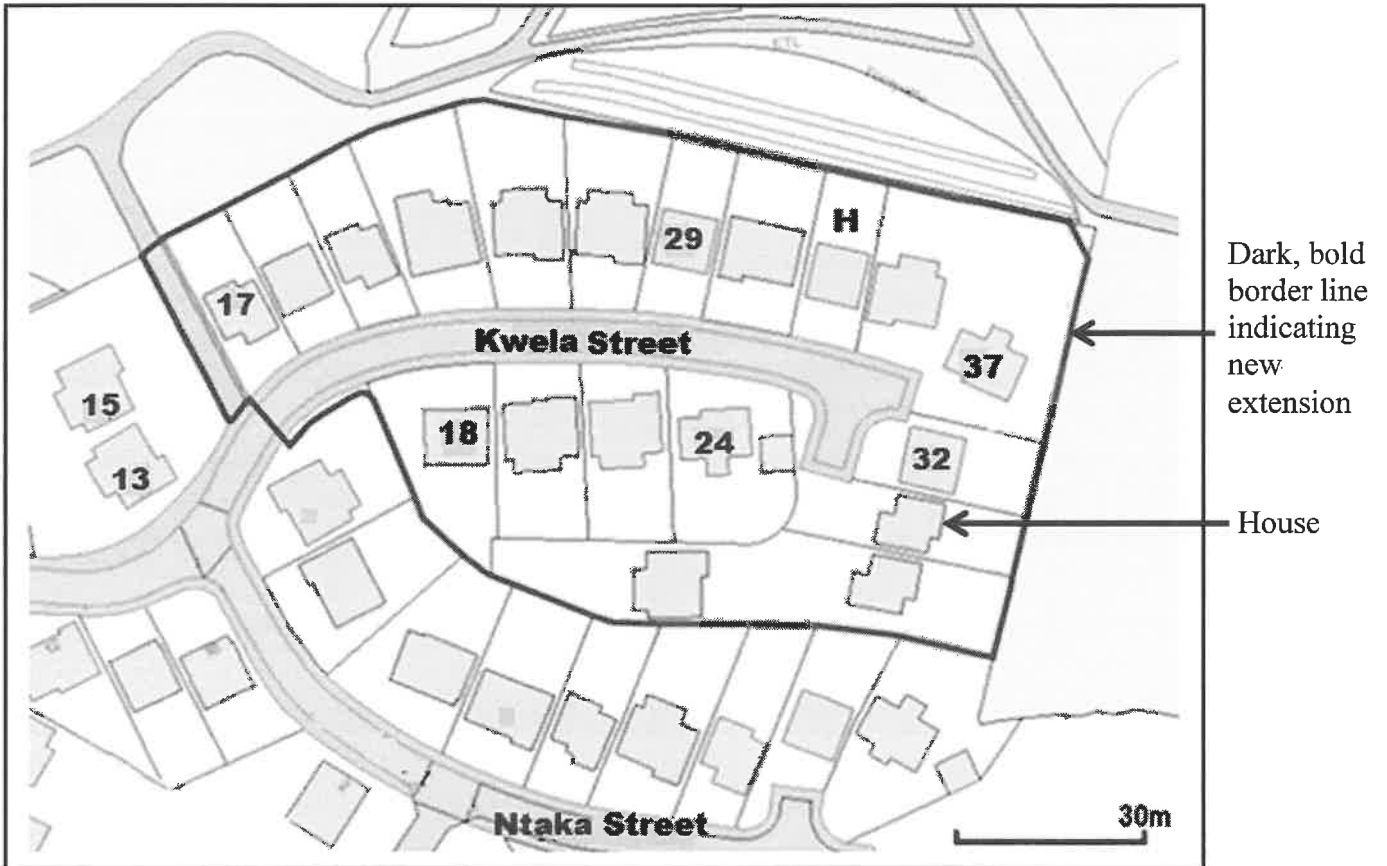
1 South African rand = 0,070 euro

[Source: Currency converter, 4 February 2017]

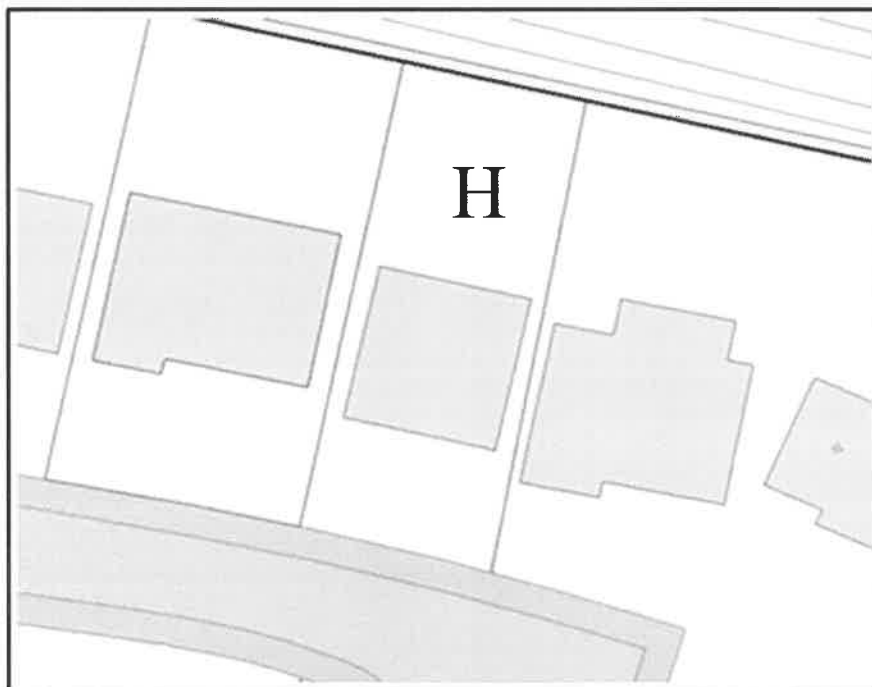
ANNEXURE D

QUESTION 3.1

Map of Mandela Park Extension



Enlargement of a section of the main map

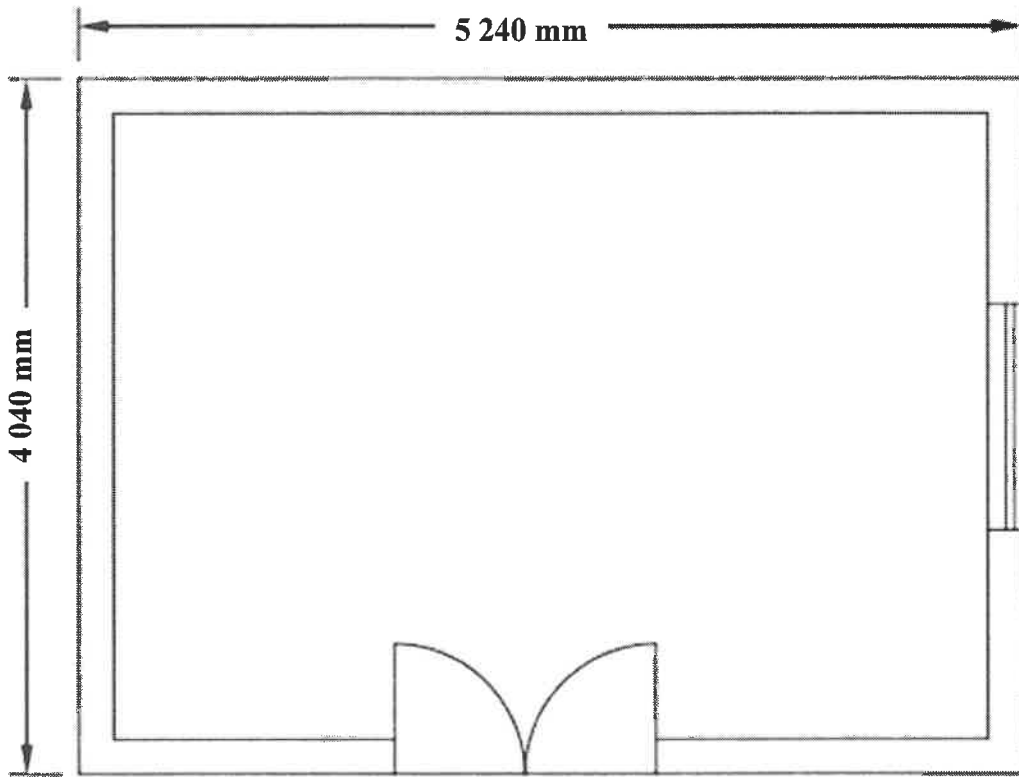


[Source: [https://uniformonline.harrogate.gov.uk/arcgis/rest/services/Base Mapping](https://uniformonline.harrogate.gov.uk/arcgis/rest/services/Base%20Mapping)]

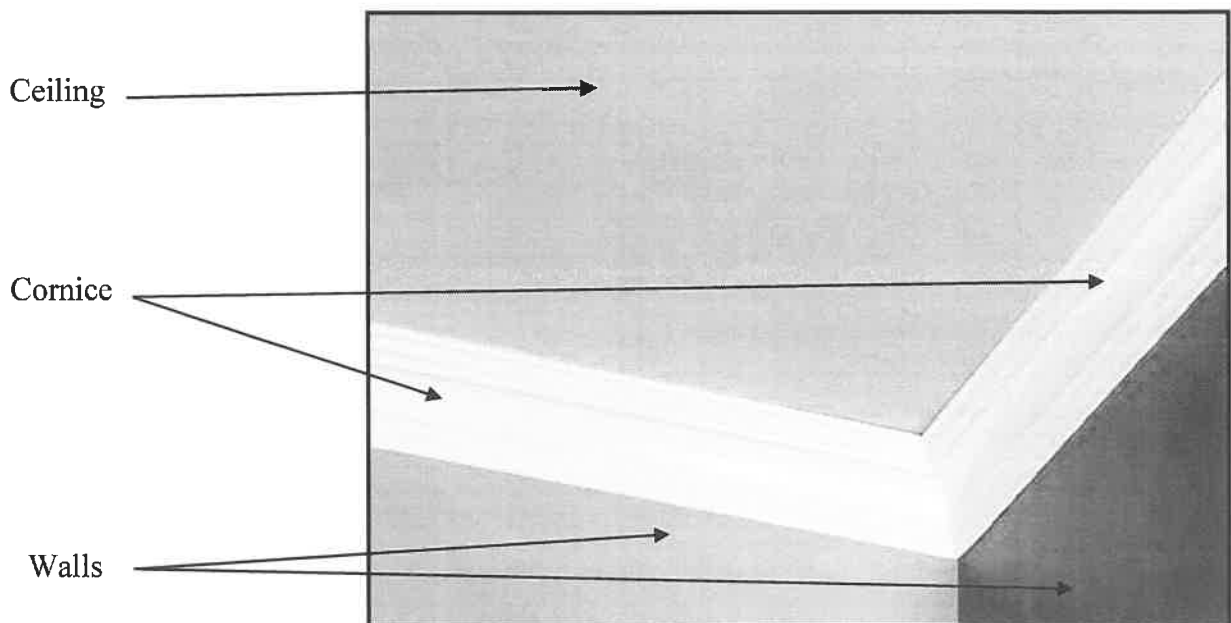
ANNEXURE E

QUESTION 3.2

Floor plan of a rectangular room showing exterior measurements



Part of a room showing the ceiling with the position of the cornice



ANNEXURE F

QUESTION 4.2

TABLE 6: TOTAL NUMBER OF STORMS FROM 2010 TO 2015 AFFECTING VARIOUS WORLD OCEANIC REGIONS AND THE TOTAL COST OF DAMAGE

		WORLD OCEANIC REGIONS			
		INDIAN	WESTERN PACIFIC	EASTERN PACIFIC	NORTH ATLANTIC
Total number of storms per year	2015	8	39	31	12
	2014	8	30	23	9
	2013	N	52	21	13
	2012	5	34	17	19
	2011	N	40	13	19
	2010	12	19	12	21
Total cost of damage in millions (US dollar)	2015	258	10 200	562	590
	2014	3 400	8 410	1 401	232
	2013	1 500	22 800	4 201	1 510
	2012	56	6 080	28	75 000
	2011	277	10 600	203	21 000
	2010	No data available			12 356

[Adapted from Meteo France]



basic education

Department:
Basic Education
REPUBLIC OF SOUTH AFRICA

**NATIONAL
SENIOR CERTIFICATE**

GRADE 12

MATHEMATICAL LITERACY P2

ADDENDUM

NOVEMBER 2017

This addendum consists of 7 pages with 6 annexures.

ANNEXURE A

QUESTION 1.1

SUMMARY OF INCOME STATEMENT AND EXPENDITURE STATEMENT FOR
THE YEAR ENDED 31 MARCH 2016

	Notes	2016 R'000	2015 R'000
Primary income	1	2 403 509	2 250 041
Other income		120 915	86 609
Primary expenses	2	(2 163 571)	(1 993 476)
Other expenses: Interest paid		(202)	(172)
Total annual profit		360 651	342 534

NOTES TO THE ANNUAL FINANCIAL STATEMENTS

	2016 R'000	2015 R'000
1. Primary income		
Service fees	...	2 249 081
Product sales	...	960
Total annual primary income	2 403 509	2 250 041
2. Primary expenses		
Advertising and promotions	(67 257)	(56 401)
Communication costs	...	(32 187)
Consumables	(640 601)	(582 823)
Depreciation	(69 866)	(64 748)
Employee benefits	(953 592)	(888 662)
Freight	(135 768)	(125 736)
Rent	(34 087)	(30 115)
Product testing	(55 267)	(54 252)
Other expenses – Includes bad debts written off, computer costs, foreign exchange variance, insurance, repairs and maintenance	(176 363)	(158 552)
Total annual primary expenses	(2 163 571)	(1 993 476)

[Adapted from 2016 SANBS Annual Report]

NOTE: Brackets () indicate deduction.

ANNEXURE B**QUESTION 1.2****TABLE 1: INDIVIDUAL TAX RATES FOR THE 2016/2017 TAX YEAR**

TAXABLE ANNUAL INCOME	RATES OF TAX
R0 –R188 000	18% of each R1
R188 001–R293 600	R33 840 + 26% of the amount above R188 000
R293 601–R406 400	R61 296 + 31% of the amount above R284 100
R406 401–R550 100	R96 264 + 36% of the amount above R406 400
R550 101–R701 300	R147 996 + 39% of the amount above R550 100
R701 301 and above	R206 964 + 41% of the amount above R701 300
TAX REBATES	
Primary rebate	R13 500
Secondary rebate (for persons 65 years and older)	R7 407
Tertiary rebate (for persons 75 years and older)	R2 466

[Source: *SARS pocket guide*, 2016/2017]

ANNEXURE C**QUESTION 2.3****TABLE 4: COMPARISON OF THE MEAN FUEL PRICES PER COUNTRY BY PRICE, AFFORDABILITY AND PERCENTAGE OF MEAN INCOME SPENT ON FUEL**

COUNTRY	MEAN FUEL PRICE		AFFORDABILITY		MEAN INCOME SPENT ON FUEL	
	RUSSIAN ROUBLE PER GALLON	RANKING	GALLON COST AS A PERCENTAGE OF MEAN DAILY WAGE	RANKING	PERCENTAGE	RANKING
Venezuela	21,44	1	0,07	1	0,02	1
China	237,93	22	19,44	50	0,52	3
Norway	425,52	61	3,63	10	0,63	7
Nigeria	92,33	5	22,57	51	0,91	14
Italy	395,98	59	8,57	29	1,12	20
India	236,51	20	93,76	61	1,23	25
Chile	260,87	24	12,52	38	2,03	46
Russia	135,67	8	9,01	30	2,17	47
Canada	226,30	18	3,32	9	2,97	58
Mexico	193,45	14	13,92	44	3,62	60
South Africa	237,35	21	26,20	55	4,11	61

[Adapted from bloomberg.com/graphic, 20 Feb. 2017]**EXCHANGE RATES:**

1 Russian rouble = 0,016 euro

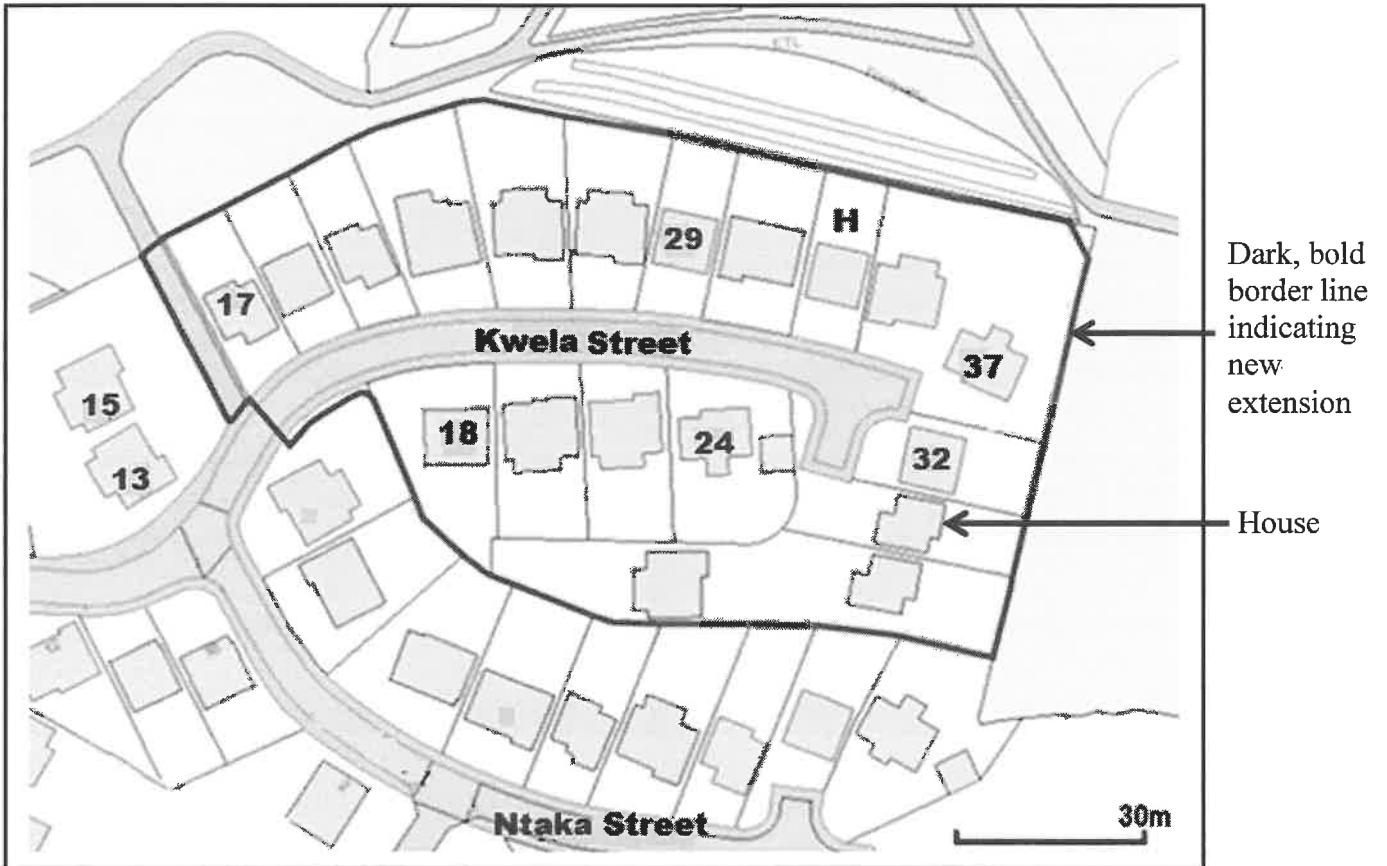
1 South African rand = 0,070 euro

[Source: Currency converter, 4 February 2017]

ANNEXURE D

QUESTION 3.1

Map of Mandela Park Extension



Enlargement of a section of the main map

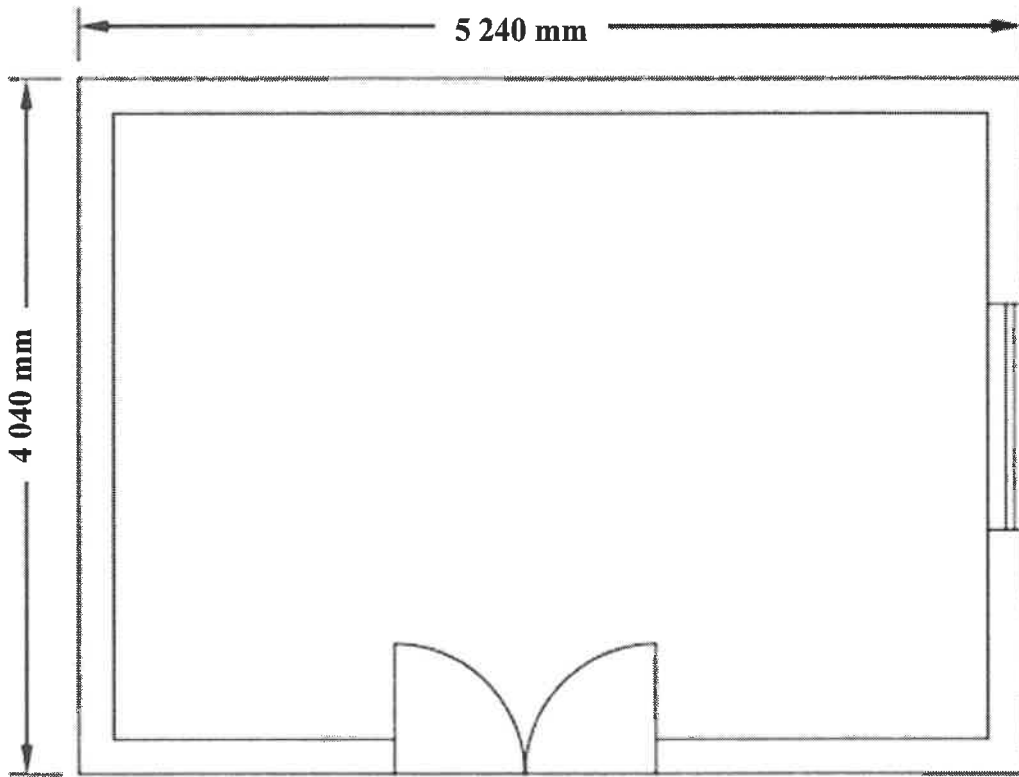


[Source: [https://uniformonline.harrogate.gov.uk/arcgis/rest/services/Base Mapping](https://uniformonline.harrogate.gov.uk/arcgis/rest/services/Base%20Mapping)]

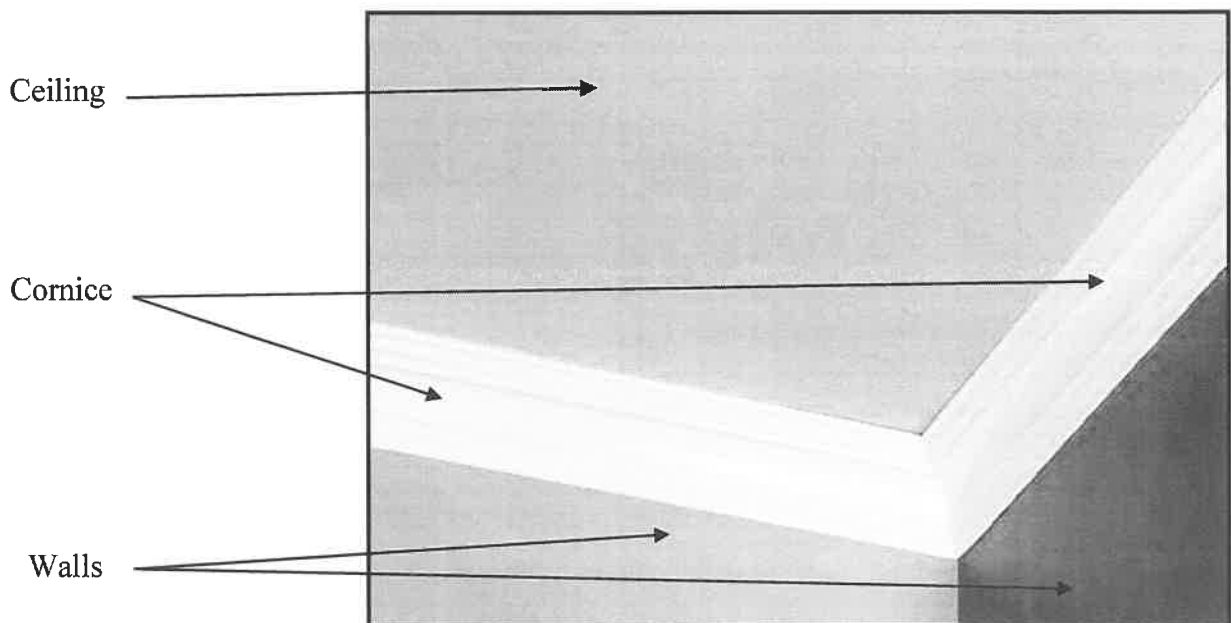
ANNEXURE E

QUESTION 3.2

Floor plan of a rectangular room showing exterior measurements



Part of a room showing the ceiling with the position of the cornice



ANNEXURE F

QUESTION 4.2

TABLE 6: TOTAL NUMBER OF STORMS FROM 2010 TO 2015 AFFECTING VARIOUS WORLD OCEANIC REGIONS AND THE TOTAL COST OF DAMAGE

		WORLD OCEANIC REGIONS			
		INDIAN	WESTERN PACIFIC	EASTERN PACIFIC	NORTH ATLANTIC
Total number of storms per year	2015	8	39	31	12
	2014	8	30	23	9
	2013	N	52	21	13
	2012	5	34	17	19
	2011	N	40	13	19
	2010	12	19	12	21
Total cost of damage in millions (US dollar)	2015	258	10 200	562	590
	2014	3 400	8 410	1 401	232
	2013	1 500	22 800	4 201	1 510
	2012	56	6 080	28	75 000
	2011	277	10 600	203	21 000
	2010	No data available			12 356

[Adapted from Meteo France]